

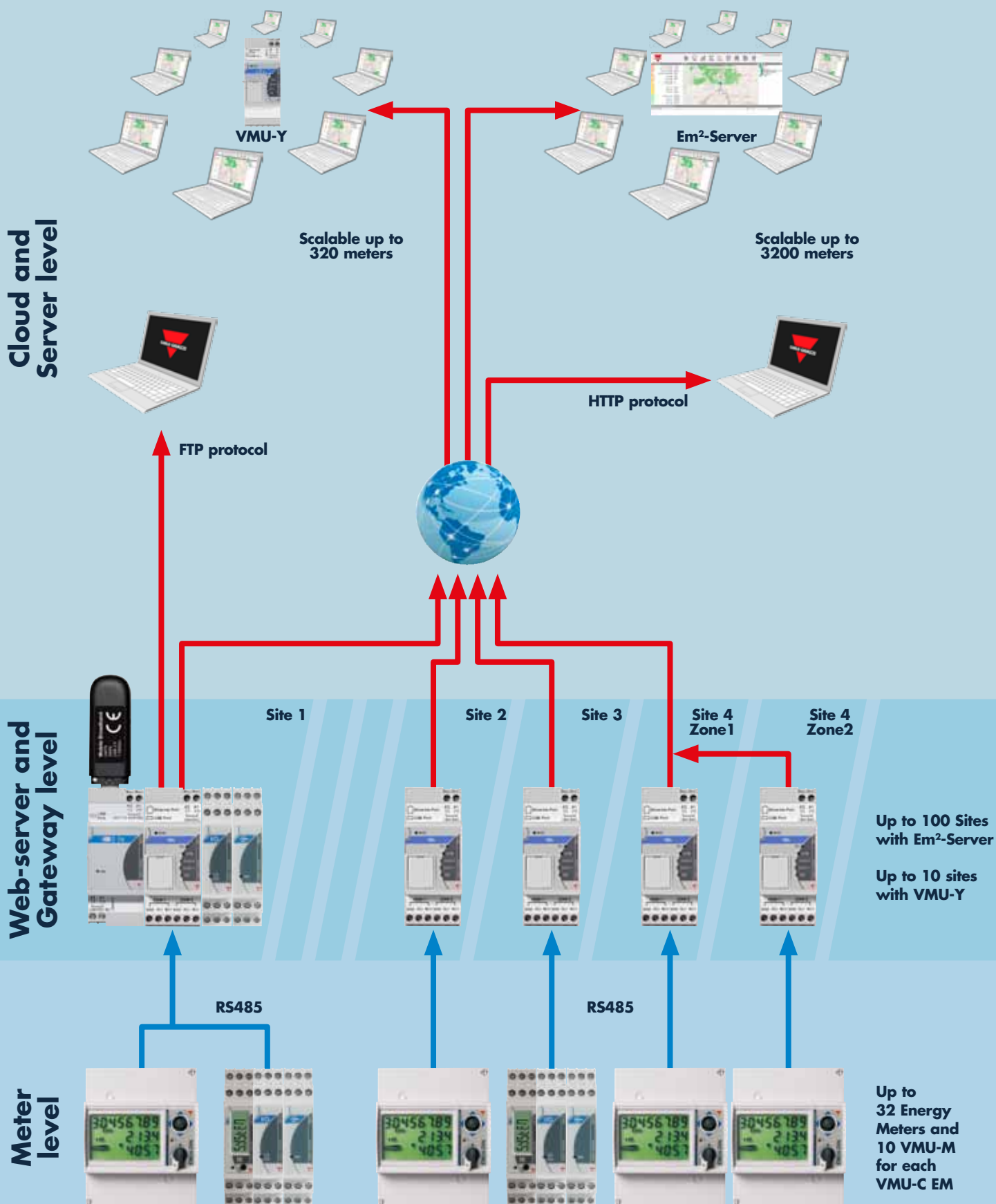


Overview

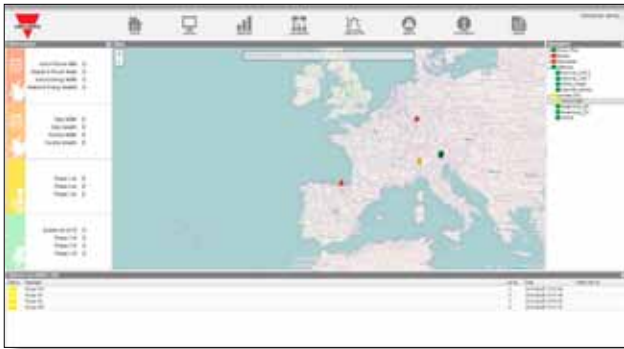
Energy management

Overview

Diagrams

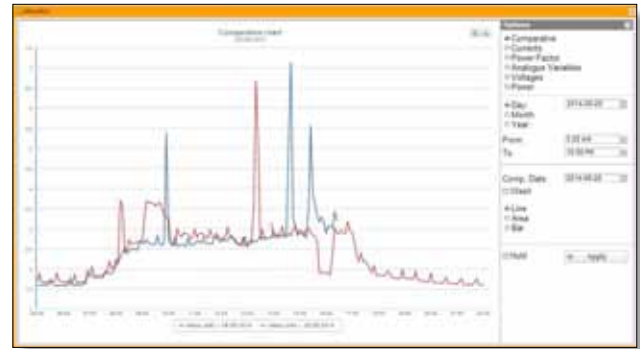


Em²-Server: Cloud solution for multi-site monitoring



Home page

- Integrated MAP view
- Hierarchical tree to navigate data with ease
- Movable and resizable views fitting the needs of a control room



Monitoring and analysis tool

- Historical data analysis tools
- Graphical monitoring features
- Comprehensive data exporting tools (standard XLS format)



Login page

- Multilingual web based user interface
- User rights management
- Concurrent data access from multiple locations



Synoptics tool

- User defined background
- Active iconized energy meters showing real time variables and status
- Multiple Synoptic views may be created



Load profile tool

- Load profile statistical analysis based on actual data
- Profiles may be exported as Excel files or represented as charts
- Calculation of average, median, maximum and statistical confidence range

Overview

Energy management

| Wound primary CT | CT for cable or bus-bar | CT for cable or bus-bar | CT for cable or bus-bar | CT for cable |
|------------------|-------------------------|-------------------------|-------------------------|--------------|
|------------------|-------------------------|-------------------------|-------------------------|--------------|



TADK/TADK-2

- Wound primary
- Primaries: 1A to 40A (TADK) 1A to 250A (TADK-2)
- Secondary: 5A (standard) 1A (available upon request)
- Sealable terminal covers
- CE



CTD-1X/2X/3X/4X

- For cable or bus-bar
- Cable: Ø23mm to Ø51mm
- Bar: 20x5mm to 64x20mm or 51x43mm
- Sealable terminal covers
- Primaries from 50A to 1600A
- Secondary: 5A (standard) 1A (available upon request)
- IEC61869-2
- CE, cURus



CTD-5S/6S

- Split-core for cable or bus-bar
- Cable: Ø26mm to Ø50mm
- Bar: 26x32mm, 50x52mm
- Sealable terminal covers
- Primaries from 100A to 1000A
- Secondary: 5A (standard) 1A (available upon request)
- IEC61869-2
- CE, cURus



CTD-8/9/10/11 S, V, H, Q

- Solid or split-core for cable or bus-bar
- Bar: 31x81mm (vertical), 81x31mm (horizontal) to 38x127mm
- Sealable terminal covers
- Primaries 150A to 4000A
- Secondary: 5A (standard) 1A (available upon request)
- IEC61869-2
- CE, cURus



CTV-1X/2X/3X/4X

- Split-core current sensor for cable
- Cable: Ø9.6mm to 20mm
- Primaries from 60A to 400A
- Secondary: 0.333VAC
- CE, cURus

| 3-phase power analysers | 3-phase power quality analysers | 3-phase power quality transducers | 3-phase power transducers |
|-------------------------|---------------------------------|-----------------------------------|---------------------------|
|-------------------------|---------------------------------|-----------------------------------|---------------------------|



WM20

- Dimensions: 96x96mm
- Installation: panel mounting
- Accuracy 0.2% (voltage, current)
- Universal power supply
- Front protection degree IP65, NEMA4X, NEMA12
- cULus approved
- Modular housing to build the instrument according to the real application needs
- Modbus and BACnet (both RS485 or Ethernet), and Profibus DPVO communication port available



WM30 / WM40

- Dimensions: 96x96mm
- Installation: panel mounting
- Accuracy 0.2% (voltage, current)
- Universal power supply
- Front protection degree IP65, NEMA4X, NEMA12
- cULus approved; Solar California listed
- Modular housing to build the instrument according to the real application needs
- Modbus and BACnet (both RS485 or Ethernet), Profibus DPVO, and EtherNet/IP communication port available
- 16-alarm PLC logic and digital inputs for utility metering (WM40)
- Built-in datalogger for instantaneous variables, dmd profiles and events (WM40)



PQT-H

- Dimensions 90x90mm
- Installation: DIN rail
- Accuracy 0.2% (voltage, current)
- Universal power supply
- Event data stamping and 12-tariff energy management
- cULus approved
- 16-alarm PLC logic and digital inputs for utility metering
- Modular housing to build the instrument according to the real application needs
- Modbus RS485 and Ethernet communication ports available



CPT-DIN

- Dimensions: 45x83.5x98.5mm
- Installation: DIN-rail
- Programmable one-, two- and three-phase measurement transducer
- Measurement of voltage, current, power, power factor, frequency and energy
- Energy metering, 9 digits
- Measuring inputs 3x230(400)VAC, 5A
- Power supply: 18-60 or 90-260VDC/AC
- Outputs: 3 analogue 20mA, or 3 10VDC, 2 relays for alarms
- RS485 Modbus RTU
- CE, cURus, CSA

Energy management

1-phase energy meters up to 45A



EM110

- Dimensions: 1 DIN module
- Installation: DIN-rail
- Electromechanical totalizer
- Bi-directional energy metering, 7 digits cl. B (EN50470)
- Measuring inputs: 115/230 VAC, 45A
- Self-powered
- Pulse output
- Sealable terminal covers
- CE, MID (PFB)

1-phase energy analysers up to 45A



EM111

- Dimensions: 1 DIN module
- Installation: DIN-rail
- Backlit touch LCD
- Measurement of voltage, current, power, power factor and frequency
- Bi-directional energy metering, 7 digits cl. B (EN50470)
- Measuring inputs: 115/230 VAC, 45A
- Self-powered
- Dual tariff management
- Pulse output or RS485 Modbus or M-Bus port
- Sealable terminal covers
- CE, MID (PFA and PFB)

1-phase energy analysers up to 100A



EM112

- Dimensions: 2 DIN modules
- Installation: DIN-rail
- Backlit touch LCD
- Display backup by supercapacitor
- Measurement of voltage, current, power, power factor and frequency
- Bi-directional energy metering, 8 digits, cl. B (EN50470)
- Measuring inputs: 115/230 VAC, 100 A
- Self-powered
- Dual tariff management
- Pulse output or RS485 Modbus or M-Bus port
- Sealable terminal covers
- CE, MID (PFA and PFB)

3-phase energy analysers for direct current up to 65A



EM340

- Dimensions: 3 DIN modules
- Installation: DIN-rail
- Backlit touch LCD
- Measurement of voltage, current, power, power factor and frequency
- Bi-directional energy metering, 3x 8-digit, cl. B (EN50470)
- Measuring inputs: 208 to 400 VLL AC, 65A
- Self-powered
- Dual tariff management
- Pulse output or RS485 Modbus or M-Bus port
- Sealable terminal covers
- CE, MID (PFA and PFB)

1 and 3-phase energy transducers



ET112 / ET340

- Dimensions: 2 DIN (ET112); 3 DIN (ET340) modules
- Installation: DIN-rail
- Measurement of voltage, current, power, power factor and frequency. THD (V, A) ET340
- Bi-directional energy metering, 2 tariffs, cl. 1 (EN62053-1)
- Measuring inputs: 115/230 VAC, 100 A (ET112); 208 to 400 VLL AC, 65 A (ET340)
- Self-powered
- RS485 Modbus port (screw, 2x RJ45)
- Optical port
- Sealable terminal covers
- CE

3-phase energy analysers



EM24

- Dimensions: 4 DIN modules
- Installation: DIN-rail
- Meter for energy from CT 5A or for direct energy 65A. External pulse counting
- Measurement of voltage, current, power, power factor and frequency. Metering from external sources and 4-tariff management
- Bi-directional energy metering on 2 8-digit counters, cl. B (EN50470-3)
- Voltage inputs: 3x230(400)VAC
- Current inputs: 5A, 65A
- 115-230VAC power supply or self-powered
- 3 inputs for external dimension counting (IS)
- Pulse or relay output: RS485 Modbus RTU, M-Bus
- Sealable terminal covers
- CE, MID (PF), cULus (5A version)

3-phase energy analysers



EM26

- Dimensions: 96x96mm
- Installation: panel mounting
- Energy meter, metering from external inputs, THD measurement.
- Measurement of voltage, current, power, power factor and frequency. Metering from external sources and 4-tariff management
- Bi-directional energy metering on 2 8-digit counters, cl. B (EN50470-3)
- Voltage inputs: 3x230 or 3x100(400)V
- Current inputs: 5A
- Power supply 90-260VDC/AC
- 3 inputs for external dimension counting (I3)
- RS485 Modbus RTU, pulse or relay
- Sealable terminal covers
- CE, MID (PF), cULus

3-phase power quality analysers/transducers



WM5

- Dimensions: 96x96mm
- Installation: panel mounting
- Accuracy 0.2% (voltage, current)
- Universal power supply
- Front protection degree IP65, NEMA4X, NEMA12
- cULus approved, Measurement Canada certified
- 16-alarm PLC logic, digital inputs for utility metering, 12 tariffs, event data stamping
- Modular housing to build the instrument according to the real application needs
- Modbus RS485 and Ethernet communication ports available

Energy management

Quick-fit 3-phase energy analysers



EM270 / EM271

- Dimensions: 4 DIN modules or 72x72mm
- Installation: DIN-rail or panel mounting
- Two 3-phase energy analysers with sum function
- Current measurement by triple CT, solid core (EM270), split-core (EM271) with RJ plug
- Quick installation through RJ connectors
- Automatic recognition of CT ratios
- Measurement of voltage, current, power, power factor and frequency,
- Energy metering, cl. 1.
- Inputs: 3x230(440)VAC, current range according to the TCD accessories
- Outputs: 2 pulse (loads 1 and 2)
- RS485 Modbus RTU
- CE, cULus

3-phase CT for EM270 for cable or bus-bar



TCD-1X/TCD-2X/TCD-3X

- Dimensions (LxHxP)mm: TCD-1X: 74.84x72x66.80 TCD-2X: 105x72x50 TCD-3X: 135x78x50
- Bus-bar sizes (mm): TCD-1X: 15.90x30.48 TCD-2X: 21.26x25.26 TCD-3X: 31.25x31.25
- Centre-to-centre distance (mm): TCD-1X: 25 TCD-2X: 35 TCD-3X: 45
- Primary: TCD-1X: 160A TCD-2X: 250A TCD-3X: 630A
- CE, UL (with EM270)

Multiple miniature split-core current sensor for EM271



TCD_M

- Equivalent to Class 1 (currents) of IEC61869-2
- Primary: 60A (TCD0M), 100A (TCD1M), 200A (TCD2M), 400A (TCD3M)
- Hole size: 9.6mm (TCD0M), 15.5mm (TCD1M), 15.5mm (TCD2M), 20.5mm (TCD3M)
- Cable length: 1.8m (TCD0M), 1.5m (TCD1M and TCD2M), 2.0m (TCD3M)
- Auto-detection of the primary current rated value by the EM271 energy meter
- TCD_M head for wall and DIN-rail mounting
- Umbilical connection (80cm) from TCD_M head to EM271 energy meter through RJ11
- CE, UL (with EM271)

Quick-fit 3-phase energy analysers



EM280

- Dimensions: 4 DIN modules or 72x72mm
- Installation: DIN-rail or panel mounting
- Six 1-phase or two 3-phase energy analysers with sum function
- Current measurement by six channels, solid core CT block with RJ plugs
- Quick installation through RJ connectors
- Automatic recognition of CT ratio
- Measurement of voltage, current, power, power factor and frequency,
- Energy metering, cl. 1.
- Inputs: 3 x 230(440)VAC, 6 x 32A
- Outputs: 2 pulse (loads 1 and 2)
- RS485 Modbus RTU
- CE, cULus

Multiple current transformer block for EM280



TCD06BX / TCD06BS

- Equivalent to Class 0.5 (BX) and 1 (BS) (current) of IEC61869-2
- Solid core (BX) or split core (BS)
- Primary current: 32A
- Hole size: 7mm (BX) or 8.5mm (BS)
- Hole centre distance: 17.5mm
- RJ11 cable length: 80, 150 or 200cm
- Auto-detection of the primary current rated value by the EM280 energy meter
- CE, UL (with EM280)

3-phase energy analysers for 5A, CTV or ROG4K



EM210

- Dimensions: 4 DIN modules or 72x72mm
- Installation: DIN-rail or panel mounting
- LCD with two installation options
- Measurement of voltage, current, power, power factor and frequency
- Bi-directional energy metering, 3 x 3-digit or 8-digit readout, cl. B (EN50470)
- Voltage inputs: 3x230(400)Vac; Current inputs: 5A CT (AV version) or 0.333mV from CTV-xX sensors (MV version) or ROG4K coils (MV version)
- Self-power supply
- Pulse output 1, RS485 Modbus RTU, high speed (up to 115kbps)
- Sealable terminal covers
- CE, cULus

Rogowski coil for EM210



ROG4K

- Flexible current sensor (Rogowski coil) for EM210
- Primary current from 20 to 4000 A
- Extended accuracy range +/-1%
- Internal diameter from 115 mm to 275 mm
- User-friendly and safe coil closing system
- Direct connection to EM210 MV energy analyser
- No power supply or external integrator required
- Coloured label on the cable for error-free connection check

3-phase multi function meters



WM12DIN/WM14DIN WM1296/WM1496

- Dimensions: 6 DIN modules or 96x96mm
- Installation: DIN-rail or panel mounting
- 3 red LED displays
- Measurement of voltage, current, power, power factor and frequency, energy (WM14)
- Energy metering, 9 digits, cl. 2
- Measuring inputs: 230VAC, 5A
- Power supply: 90-260VDC/AC
- Pulse or relay outputs
- RS485 Modbus
- CE, cULus

Energy management

Web server and datalogger



VMU-C EM

- Micro PC with datalogger function
- Web Server, Push and API Pull
- Modbus TCP Slave function
- Data display (charts and tables)
- Data export to HTML compatible with Excel and other spreadsheets
- 4GB internal memory, Back-up memory on micro SDHC and USB
- Energy analysis of each individual load
- Invoicing simulation
- Virtual meter with sum function
- VMU-W alarm management (e-mail or SMS)
- Power supply: 24VDC
- 1 RS485 for 32 Energy meters, 1 RS485 for VMU-M EM, RJ45 for Ethernet connection
- CE, cULus

USB dongle connection modules



VMU-D

- Dimensions: 2 DIN modules
- Installation: DIN-rail
- Compatible with Carlo Gavazzi approved 3G/4G USB modems
- Power supply 24 VDC (+/- 20%)
- Suitable for use with VMU-C and VMU-Y
- 3G or 4G Mobile Internet connectivity
- SMS alerting
- SMS commands
- CE, cULus

Modules for VMU-C EM



VMU-P EM

- Dimensions: 1 DIN module
- Installation: DIN-rail
- Connection to VMU-C EM, directly or through VMU-M EM, on RS485 for measurement and state acquisition
- Measuring inputs: Temperatures, PT100 or PT1000, 1 for current 0-20mA
- Power supply: from the local bus or from VMU-M EM
- Proprietary communication with VMU-C EM or VMU-M EM
- CE, cULus

Modules for VMU-C EM



VMU-O EM

- Dimensions: 1 DIN module
- Installation: DIN-rail
- Connection to VMU-C EM, directly or through VMU-M EM, on RS485 for measurement and state acquisition
- Power supply: from the local bus or from VMU-M EM
- 2 digital inputs
- 2 relay outputs
- Proprietary communication with VMU-C EM or VMU-M EM
- CE, cULus

Embedded aggregation server



VMU-Y

- Dimensions: 2-DIN module;
- Installation: DIN-rail mounting
- Multi-site monitoring management
- Power supply 24VDC (\pm 20%)
- 2 USB ports (data /connection backup)
- 1 SD port (backup)
- Load profile management
- Data analysis and benchmark
- Data and event logging
- Customizable graphical synoptic
- All data exported in format compatible with Excel or other spread sheets
- Tariffs and contract management
- Alarms management
- Database replication from up to 10 VMU-C EM

Cloud solution for multi-site monitoring



Em²-Server

- Virtual machine for energy data management
- Multi-site monitoring management
- Flexible and scalable architecture
- VMware[®] technology compatibility
- Load profile management
- Data analysis and benchmark
- Data and event logging
- Customizable graphical synoptic
- All data exported in format compatible with Excel or other spread sheets
- Tariffs and contract management
- Alarms management
- Database replication from up to 100 VMU-C EM

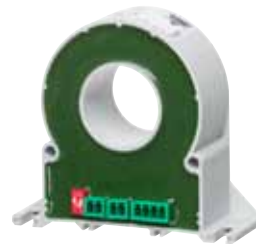
Contactless power analysers



CPA050

- Dimensions: 63 x 46 x 25 mm (without connectors);
- Installation: DIN-rail and panel mounting
- 1-phase AC (from 1 to 400 Hz) or DC
- Power supply from 9 to 30 VDC
- Contactless Hall effect sensing for current (15 mm hole diameter)
- True RMS AC and DC monitoring
- Voltage range: 800 VAC, 1000 VDC
- Current range: 50 AAC, 50 ADC

Contactless power analysers



CPA300

- Dimensions: 99 x 89 x 30 mm (without connectors);
- Installation: DIN-rail and panel mounting
- 1-phase AC (from 1 to 400 Hz) or DC
- Power supply from 9 to 30 VDC
- Contactless Hall effect sensing for current (33 mm hole diameter)
- True RMS AC and DC monitoring
- Voltage range: 800 VAC, 1000 VDC
- Current range: 300 AAC, 400 ADC

OUR SALES NETWORK IN EUROPE

AUSTRIA

Carlo Gavazzi GmbH
Ketzergasse 374,
A-1230 Wien
Tel: +43 1 888 4112
Fax: +43 1 889 10 53
office@carlogavazzi.at

BELGIUM

Carlo Gavazzi NV/SA
Mechelsesteenweg 311,
B-1800 Vilvoorde
Tel: +32 2 257 4120
Fax: +32 2 257 41 25
sales@carlogavazzi.be

DENMARK

Carlo Gavazzi Handel A/S
Over Hadstenevej 40,
DK-8370 Hadsten
Tel: +45 89 60 6100
Fax: +45 86 98 15 30
handel@gavazzi.dk

FINLAND

Carlo Gavazzi OY AB
Petaksentie 2-4,
FI-00630 Helsinki
Tel: +358 9 756 2000
Fax: +358 9 756 20010
myynti@gavazzi.fi

FRANCE

Carlo Gavazzi Sarl
Zac de Paris Nord II, 69, rue de la Belle Etoile,
F-95956 Roissy CDG Cedex
Tel: +33 1 49 38 98 60
Fax: +33 1 48 63 27 43
french.team@carlogavazzi.fr

GERMANY

Carlo Gavazzi GmbH
Pfnorstr. 10-14
D-64293 Darmstadt
Tel: +49 6151 81000
Fax: +49 6151 81 00 40
info@gavazzi.de

GREAT BRITAIN

Carlo Gavazzi UK Ltd
4.4 Frimley Business Park,
Frimley, Camberley, Surrey GU16 7SG
Tel: +44 1 276 854 110
Fax: +44 1 276 682 140
sales@carlogavazzi.co.uk

ITALY

Carlo Gavazzi SpA
Via Milano 13,
I-20020 Lainate
Tel: +39 02 931 761
Fax: +39 02 931 763 01
info@gavazziacbu.it

NETHERLANDS

Carlo Gavazzi BV
Wijkermeerweg 23,
NL-1948 NT Beverwijk
Tel: +31 251 22 9345
Fax: +31 251 22 60 55
info@carlogavazzi.nl

NORWAY

Carlo Gavazzi AS
Melkeveien 13,
N-3919 Porsgrunn
Tel: +47 35 93 0800
Fax: +47 35 93 08 01
post@gavazzi.no

PORTUGAL

Carlo Gavazzi Lda
Rua dos Jerónimos 38-B,
P-1400-212 Lisboa
Tel: +351 21 361 7060
Fax: +351 21 362 13 73
carlogavazzi@carlogavazzi.pt

SPAIN

Carlo Gavazzi SA
Avda. Iparraguirre, 80-82,
E-48940 Leioa (Bizkaia)
Tel: +34 94 480 4037
Fax: +34 94 431 6081
gavazzi@gavazzi.es

SWEDEN

Carlo Gavazzi AB
V:a Kyrkogatan 1,
S-652 24 Karlstad
Tel: +46 54 85 1125
Fax: +46 54 85 11 77
info@carlogavazzi.se

SWITZERLAND

Carlo Gavazzi AG
Verkauf Schweiz/Vente Suisse
Sumpfstrasse 3,
CH-6312 Steinhausen
Tel: +41 41 747 4535
Fax: +41 41 740 45 40
info@carlogavazzi.ch

OUR SALES NETWORK IN THE AMERICAS

USA

Carlo Gavazzi Inc.
750 Hastings Lane,
Buffalo Grove, IL 60089, USA
Tel: +1 847 465 6100
Fax: +1 847 465 7373
sales@carlogavazzi.com

CANADA

Carlo Gavazzi Inc.
2660 Meadowvale Boulevard,
Mississauga, ON L5N 6M6, Canada
Tel: +1 905 542 0979
Fax: +1 905 542 22 48
gavazzi@carlogavazzi.com

MEXICO

Carlo Gavazzi Mexico S.A. de C.V.
Calle La Montaña no. 28, Fracc. Los Pastores
Naucalpan de Juárez, EDMEX CP 53340
Tel & Fax: +52.55.5373.7042
mexicosales@carlogavazzi.com

BRAZIL

Carlo Gavazzi Automação Ltda. Av.
Francisco Matarazzo, 1752
Conj 2108 - Barra Funda - São Paulo/SP
Tel: +55 11 3052 0832
Fax: +55 11 3057 1753
info@carlogavazzi.com.br

OUR SALES NETWORK IN ASIA AND PACIFIC

SINGAPORE

Carlo Gavazzi Automation Singapore Pte. Ltd.
61 Tai Seng Avenue #05-06
Print Media Hub @ Paya Lebar iPark
Singapore 534167
Tel: +65 67 466 990
Fax: +65 67 461 980
info@carlogavazzi.com.sg

MALAYSIA

Carlo Gavazzi Automation (M) SDN. BHD.
D12-06-G, Block D12,
Pusat Perdagangan Dana 1,
Jalan PJU 1A/46, 47301 Petaling Jaya,
Selangor, Malaysia.
Tel: +60 3 7842 7299
Fax: +60 3 7842 7399
sales@gavazzi-asia.com

CHINA

Carlo Gavazzi Automation
(China) Co. Ltd.
Unit 2308, 23/F.,
News Building, Block 1, 1002
Middle Shennan Zhong Road,
Shenzhen, China
Tel: +86 755 83699500
Fax: +86 755 83699300
sales@carlogavazzi.cn

HONG KONG

Carlo Gavazzi Automation
Hong Kong Ltd.
Unit 3 12/F Crown Industrial Bldg.,
106 How Ming St., Kwun Tong,
Kowloon, Hong Kong
Tel: +852 23041228
Fax: +852 23443689

OUR COMPETENCE CENTRES AND PRODUCTION SITES

DENMARK

Carlo Gavazzi Industri A/S
Hadsten

MALTA

Carlo Gavazzi Ltd
Zejtun

ITALY

Carlo Gavazzi Controls SpA
Belluno

LITHUANIA

Uab Carlo Gavazzi Industri Kaunas
Kaunas

CHINA

Carlo Gavazzi Automation (Kunshan) Co., Ltd.
Kunshan

HEADQUARTERS

Carlo Gavazzi Automation SpA
Via Milano, 13
I-20020 - Lainate (MI) - ITALY
Tel: +39 02 931 761
info@gavazziautomation.com



CARLO GAVAZZI
Automation Components

Energy to Components!

www.gavazziautomation.com

